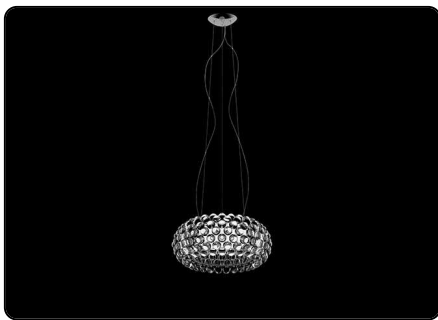


Caboche, suspension design Patricia Urquiola + Eliana Gerotto 2005

FOSCARINI



Resulting from the desire to create a precious and charming lamp like a pearl bracelet, accommodated with a focus on light weight and transparency thanks to the use of PMMA, Caboche established itself from the onset as one of Foscarini's best-selling products, and it has become a genuine icon in the world of lighting and design. Rich, bright and sophisticated, Caboche is a mosaic of refractions, a perfect fusion of different personalities in the one form, coming together to create the body and light effect of the lamp. When it is turned on, the light

diffuses from inside the spheres like lots of bright crystals, providing 360° lighting of the surrounding environment and guaranteeing direct lighting on the underlying surface and reflection on the ceiling. This lighting emotion is also vouched by Led versions – affording high energy efficiency levels and durability - completely re-engineered in terms of lighting technology especially to ensure the same intensity, diffusion and temperature as the light produced by the original version. Caboche suspension lamp is a jewel of creativity and technology, available in

three sizes and two versions: transparent and yellow gold. The lamp is the perfect protagonist for homes or public areas, uniting visual impact with lightness, decorative value and functionality.

Caboche, suspension technical info

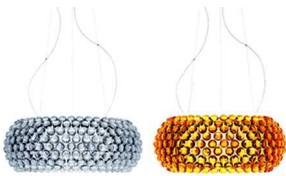
FOSCARINI

Description

Suspension lamp with diffused light. Acidetched finish blown glass internal diffuser, satin finish opaline glass lower screen. In the small version, single acid-etched finish blow glass internal diffuser. External diffuser consisting of a crown of polycarbonate arches secured to a chromed metal mount and PMMA spheres. Fitted with three stainless steel suspension cables for the medium and large versions, one for the small version, and transparent electrical cable. Ceiling rose with galvanised metal bracket and glossy chromed batch-dyed ABS cover. Canopy decentralisation kit available. Multiple canopy for small version up to 6 suspension lamps.

Materials polymethylmethacrylate, blown glass, chromed metal and aluminium (LED)

Colors transparent, golden yellow

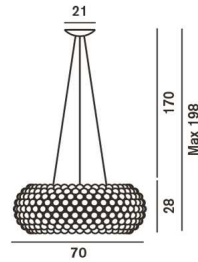


Brightness light
semi-diffused and direct down light



Model

Caboche large



Weight
net kg: 19,60
gross kg: 22,50

Packaging
vol. m3: 0,266
n. boxes: 2

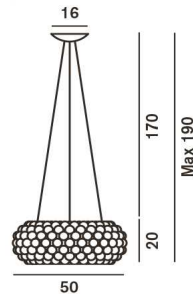
Bulbs
Halogen 1x230W RSC type T3



Certifications

Energy Class
C

Caboche medium



Weight
net kg: 10,20
gross kg: 12,50

Packaging
vol. m3: 0,097
n. boxes: 2

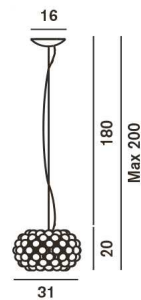
Bulbs
Halogen energy saver 1x160W R7s



Certifications

Energy Class
C

Caboche small



Weight
net kg: 4,80
gross kg: 5,80

Packaging
vol. m3: 0,045
n. boxes: 2

Bulbs
halogen energy saver 1x60W G9



Certifications

Energy Class
C

[2D/3D drawings](#)
[photometric info](#)
[assembly instructions](#)

download area



Caboche, suspension technical info

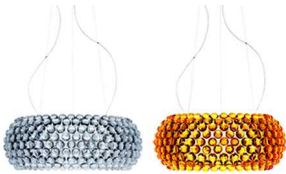
FOSCARINI

Description

Suspension lamp with diffused light. Acidetched finish blown glass internal diffuser, satin finish opaline glass lower screen. In the small version, single acid-etched finish blow glass internal diffuser. External diffuser consisting of a crown of polycarbonate arches secured to a chromed metal mount and PMMA spheres. Fitted with three stainless steel suspension cables for the medium and large versions, one for the small version, and transparent electrical cable. Ceiling rose with galvanised metal bracket and glossy chromed batch-dyed ABS cover. Canopy decentralisation kit available. Multiple canopy for small version up to 6 suspension lamps.

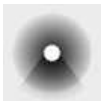
Materials polymethylmethacrylate, blown glass, chromed metal and aluminium (LED)

Colors transparent, golden yellow



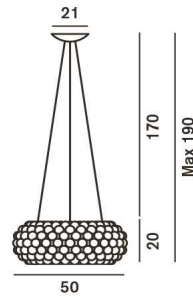
Brightness light

semi-diffused and direct down light



Model

Caboche medium LED



Weight
net kg: 10,20
gross kg: 12,30

Packaging
vol. m3: 0,097
n. boxes: 2

Bulbs

LED 35W 3000°K 3062 lm CRI > 90 88 lm/W

Certifications

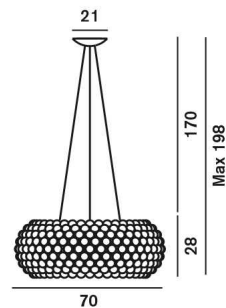
    IP 20

Energy Class

A⁺

Dimmable Possible configurations:
On-Off/Push/DALI

Caboche large LED



Weight
net kg: 17,00
gross kg: 21,20

Packaging
vol. m3: 0,266
n. boxes: 2

Bulbs

LED 46W 3000°K 4330 lm CRI>90 94,1 lm/W

Certifications

    IP 20

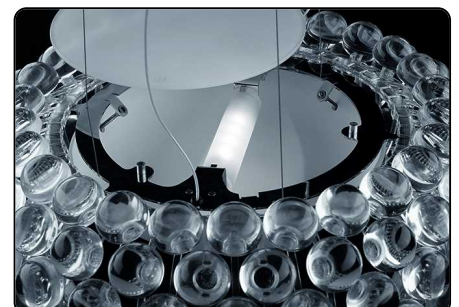
Energy Class

A⁺

Dimmable Possible configurations:
On-Off/Push/DALI

[2D/3D drawings](#)
[photometric info](#)
[assembly instructions](#)

download area



Caboche, suspension multiple composition

FOSCARINI

Description

A technical solution that couples function with design harmony: The multiple ceiling flange of Foscarini makes it possible to create compositions up to 9 suspension lamps to create cascades of light of high emotional impact, particularly suitable to enrich a stair case. The standard multiple flange is designed to suit a large number of suspensions from both Foscarini and Diesel with Foscarini collections.

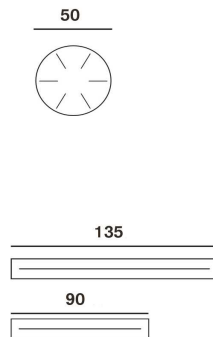
Materials

Lacquered metal

Colors

White

Multiple canopy

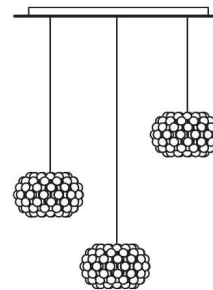
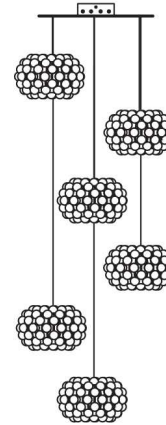


Weight

net kg: 9,00
gross kg: 10,70

Packaging

vol. m3: 0,038
n. boxes: 1



Caboche, suspension designer+collection

FOSCARINI

Patricia Urquiola + Eliana Gerotto

Born in Oviedo (Spain), PATRICIA URQUIOLA studied in Madrid and graduated at Politecnico di Milano with Achille Castiglioni as a tutor. From 1990 to 2000 she collaborated with De Padova and Lissoni Associati. In 2001 she started her own design studio, through which she has collaborated with many brands at an international level. ELIANA GEROTTO was born in Venice. She started her career in Milan as a graphic designer. She got her degree in Communication Techniques at Fondazione Davide Campari in Milan. She worked in various fields as graphic, industrial designer, set curator and interior decorator.

Watch the video Caboche



Go to concept site for Caboche
www.foscarini.com/caboche



Caboche Collection



table



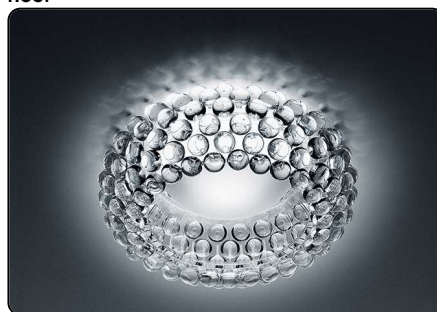
floor



suspension



wall



ceiling